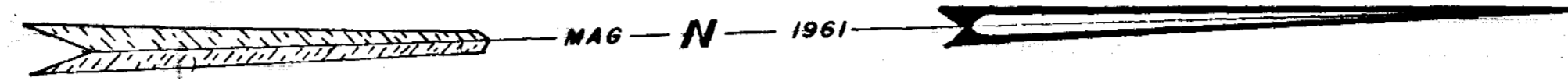


**CURVE DATA**

Curve	Point	Bearing	Distance
C1	Start	N5019.17	15'
	End	E4705.33	15'
C2	Start	N5019.17	15'
	End	E4745.07	15'
C3	Start	N5019.17	15'
	End	E4705.33	129.83'
C4	Start	N5019.17	15'
	End	E4745.07	90.16'
C5	Start	N4883.60	71.50'
	End	E4749.24	25.02'
C6	Start	N4914.33	127.76'
	End	E4774.85	25.02'

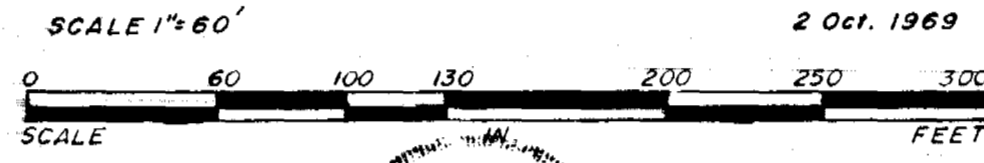


# RICH-MAR ACRES

MARTHA RICHARDSON  
EMMANUEL WESLEYAN CHURCH  
Owners & Developers

PARSONS ELECT DIST  
WICOMICO COUNTY, MD.

2 Oct. 1969

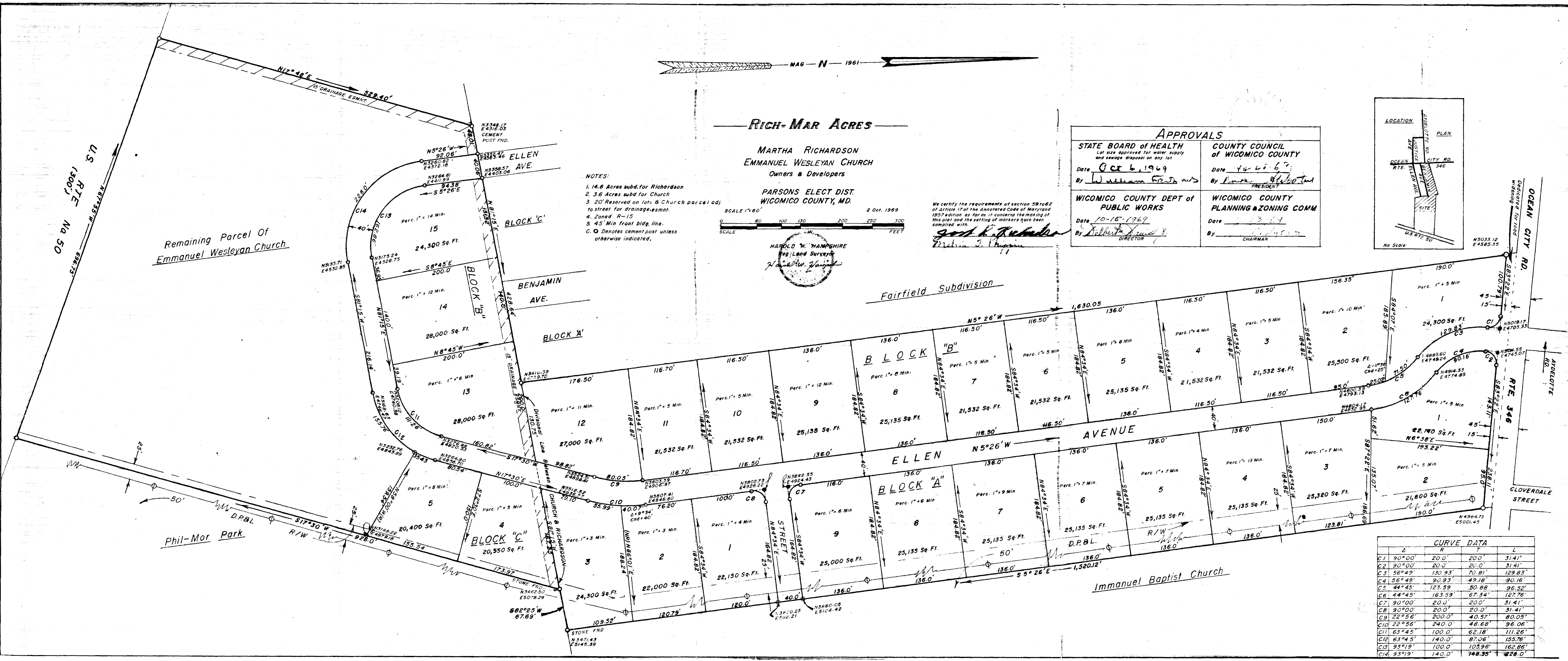
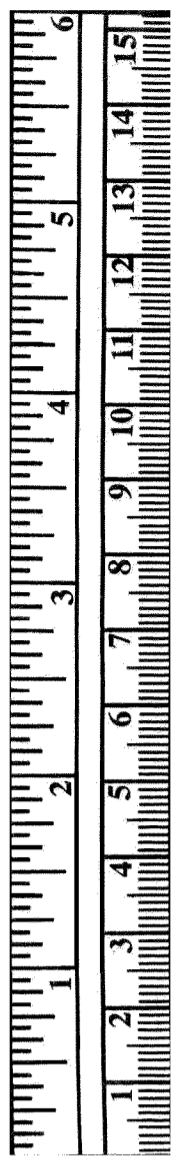
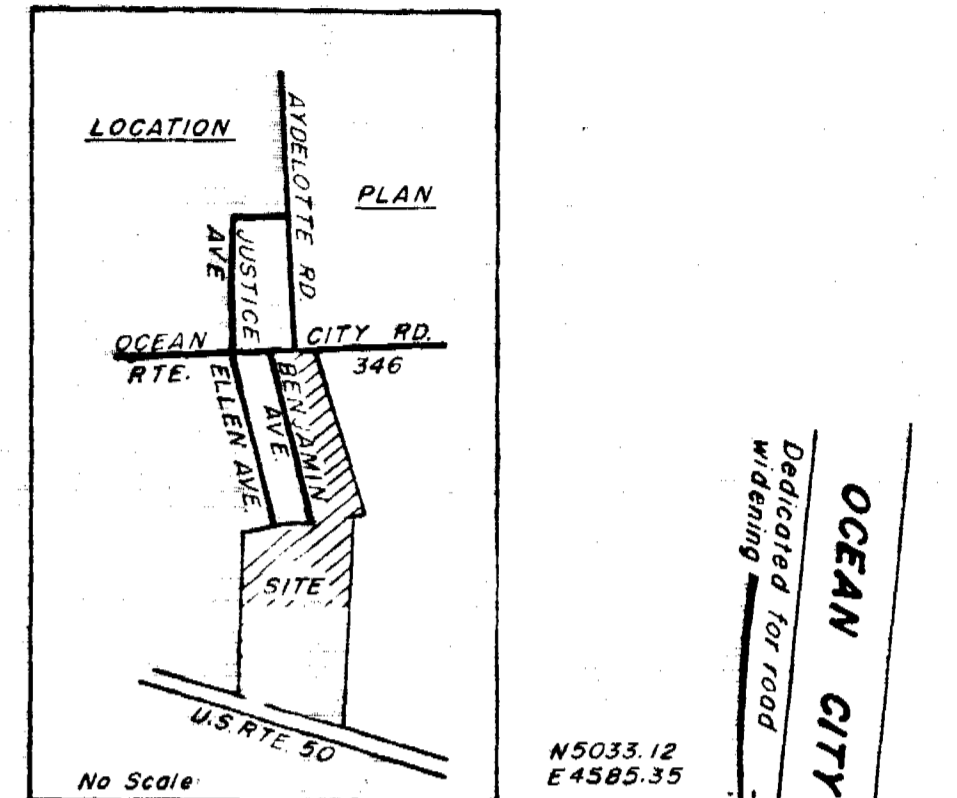


HAROLD W. HAMPSHIRE  
Reg. Land Surveyor  
Name: W. Hamps

We certify the requirements of section 597062 of Article 17 of the Annotated Code of Maryland 1957 edition as far as it concerns the making of this plat and the setting of markers have been complied with.  
*God L. P. ...*  
*William J. ...*

- NOTES:
- 14.8 Acres subd. for Richardson
  - 3.6 Acres subd. for Church
  - 20' Reserved on lots B Church parcel adj. to street for drainage esmnt.
  - Zoned R-15
  - 45' Min front bldg. line.
- C. O Denotes cement post unless otherwise indicated.

APPROVALS	
STATE BOARD of HEALTH Lot size approved for water supply and sewage disposal on any lot. Date <u>Oct 6, 1969</u> By <u>William ...</u>	COUNTY COUNCIL of WICOMICO COUNTY Date <u>10-6-69</u> By <u>...</u> PRESIDENT
WICOMICO COUNTY DEPT of PUBLIC WORKS Date <u>10-15-1969</u> By <u>...</u> DIRECTOR	WICOMICO ZONING COMM Date <u>...</u> By <u>...</u> CHAIRMAN



CURVE DATA			
Δ	R	T	L
C1	90°00'	20.0'	31.41'
C2	90°00'	20.0'	31.41'
C3	56°49'	130.93'	70.81'
C4	56°49'	90.93'	49.18'
C5	44°45'	123.59'	50.88'
C6	44°45'	163.59'	67.34'
C7	90°00'	20.0'	31.41'
C8	90°00'	20.0'	31.41'
C9	22°56'	200.0'	40.57'
C10	22°56'	240.0'	48.68'
C11	63°45'	100.0'	62.18'
C12	63°45'	140.0'	87.06'
C13	93°19'	100.0'	103.96'
C14	93°19'	140.0'	148.35'