

# Wicomico County Residential Market Report

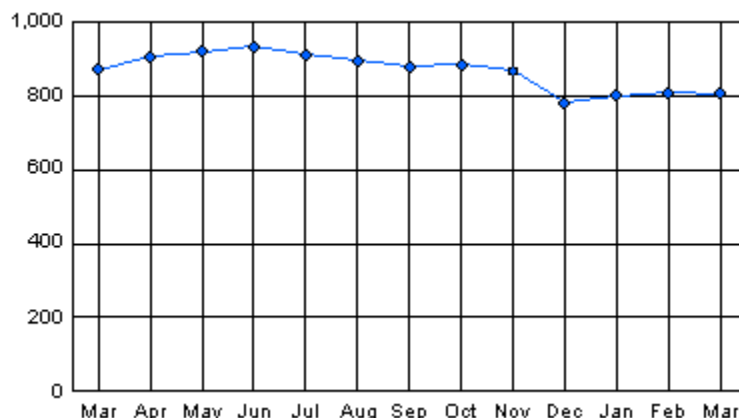
# HOUSING REPORT Single Family Homes March 2009

## Listings

Price Range	New This Month			Total Actives		
	2009	2008	% Change	2009	2008	% Change
0 - 149,999	28	25	12.0	201	134	50.0
150,000 - 199,999	39	43	-9.3	196	185	5.9
200,000 - 299,999	33	77	-57.1	221	302	-26.8
300,000 - 399,999	6	20	-70.0	85	125	-32.0
400,000 - 499,999	5	11	-54.5	46	59	-22.0
500,000 - 599,999	3	8	-62.5	21	28	-25.0
600,000 - 699,999	1	2	-50.0	7	16	-56.3
700,000 - 799,999	0	0	N/A	3	3	0.0
800,000 - 899,999	1	0	N/A	4	3	33.3
900,000 - 999,999	0	0	N/A	7	1	600.0
1,000,000 - 1,249,999	0	0	N/A	1	1	0.0
1,250,000 - 1,499,999	0	0	N/A	3	2	50.0
1,500,000 +	0	2	-100.0	10	11	-9.1
<b>Totals</b>	<b>116</b>	<b>188</b>	<b>-38.3</b>	<b>805</b>	<b>870</b>	<b>-7.5</b>

## Inventory Trend

Listings Active at End of Month

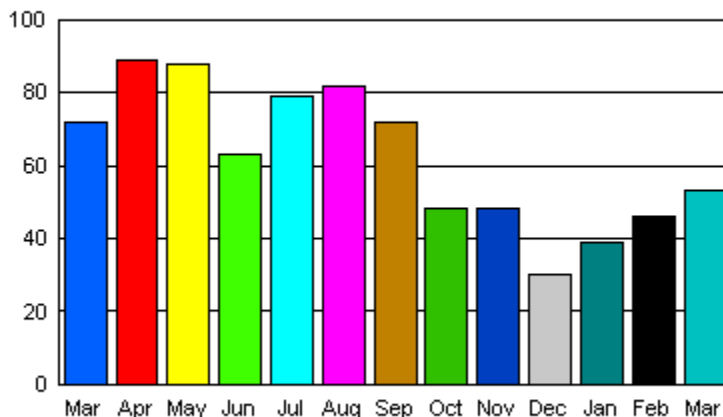


## Contracts

Price Range	New This Month			Year To Date		
	2009	2008	% Change	2009	2008	% Change
0 - 149,999	13	26	-50.0	30	58	-48.3
150,000 - 199,999	19	13	46.2	43	53	-18.9
200,000 - 299,999	16	18	-11.1	37	62	-40.3
300,000 - 399,999	4	9	-55.6	14	19	-26.3
400,000 - 499,999	1	5	-80.0	2	10	-80.0
500,000 - 599,999	0	0	N/A	2	2	0.0
600,000 - 699,999	0	1	-100.0	0	2	-100.0
700,000 - 799,999	0	0	N/A	0	0	N/A
800,000 - 899,999	0	0	N/A	0	0	N/A
900,000 - 999,999	0	0	N/A	0	0	N/A
1,000,000 - 1,249,999	0	0	N/A	0	0	N/A
1,250,000 - 1,499,999	0	0	N/A	0	0	N/A
1,500,000 +	0	0	N/A	0	0	N/A
<b>Totals</b>	<b>53</b>	<b>72</b>	<b>-26.0</b>	<b>128</b>	<b>206</b>	<b>-38.0</b>

## Sales Trend

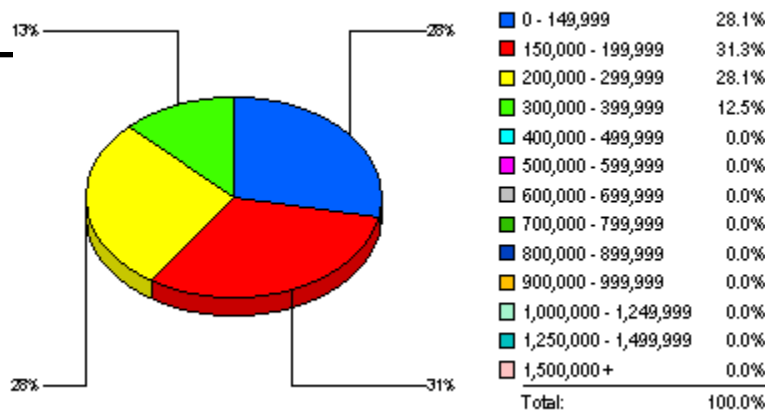
Ratified Contracts Per Month



## Settlements

Price Range	New This Month			Year To Date		
	2009	2008	% Change	2009	2008	% Change
0 - 149,999	9	11	-18.2	28	34	-17.6
150,000 - 199,999	10	19	-47.4	25	36	-30.6
200,000 - 299,999	9	21	-57.1	23	50	-54.0
300,000 - 399,999	4	5	-20.0	10	15	-33.3
400,000 - 499,999	0	2	-100.0	1	3	-66.7
500,000 - 599,999	0	0	N/A	0	3	-100.0
600,000 - 699,999	0	1	-100.0	0	1	-100.0
700,000 - 799,999	0	0	N/A	0	1	-100.0
800,000 - 899,999	0	0	N/A	0	0	N/A
900,000 - 999,999	0	0	N/A	0	0	N/A
1,000,000 - 1,249,999	0	0	N/A	0	0	N/A
1,250,000 - 1,499,999	0	0	N/A	0	0	N/A
1,500,000 +	0	0	N/A	0	0	N/A
<b>Totals</b>	<b>32</b>	<b>59</b>	<b>-45.8</b>	<b>87</b>	<b>143</b>	<b>-39.2</b>

## Market By Price Range



DATA SOURCE: Automated Regional Information Systems, Inc. (ARIS)

NOTES: Properties not listed through this Multiple Listing Service are not reflected. The term "sales" represents ratified purchase contracts. Current year information is preliminary and subject to revision. Current year-to-date contract information may not equal the sum of the monthly contract totals reported.

For 3/2009	Average	Median
Days on Market	160	130
List Price	\$203,784	\$199,000
Sales Price	\$188,696	\$189,000
Sell Price/List Price	92.60%	94.97%